



ubiwhere
SUITING THE FUTURE

Ubiwhere
Rui A. Costa (CEO)

Quality / Recognition

ubiwhere
SUITING THE FUTURE

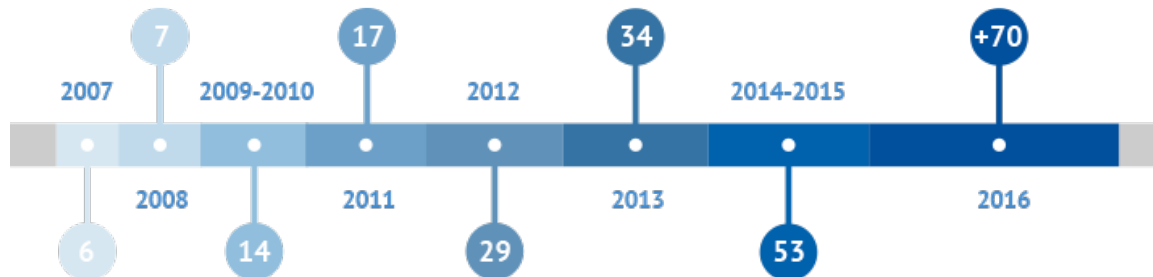


CMMIDEV / 3 SM
Exp. 2017-12-12 / Appraisal #23133

Team

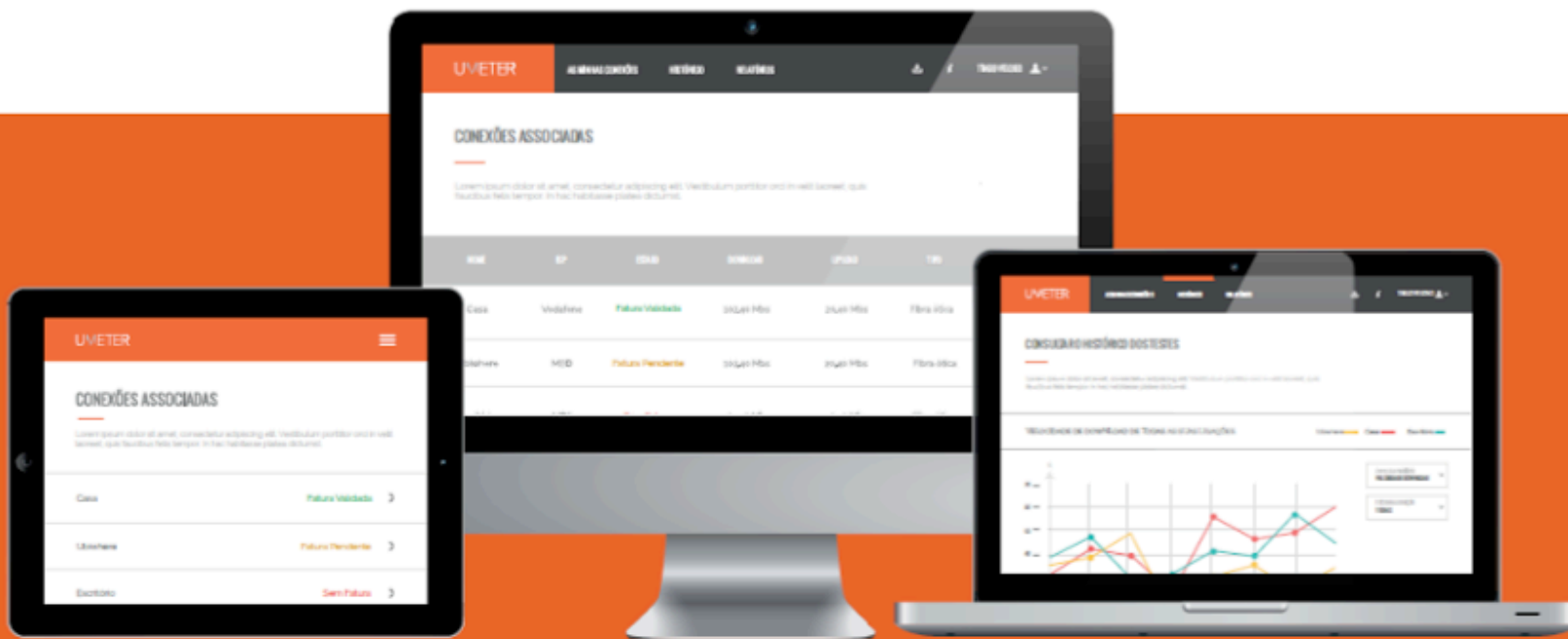


of team members



90%
with a Master's
degree

SOLUTIONS



PORTUGAL COIMBRA SONDA 777



GRAVAR TS STREAM **CONFIGURAR SONDA**

MORADA
Rua do Padrão - Eiras 3025-045 Coimbra

COORDENADAS
LA 40.180447 LO -8.426514

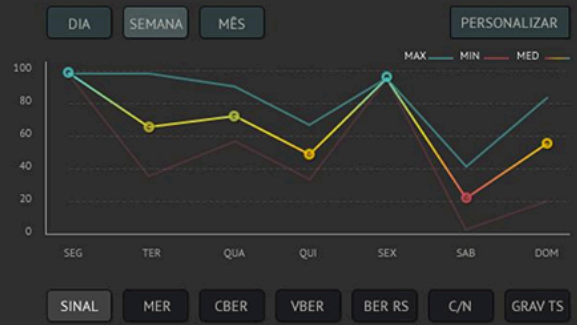
Nº DE SÉRIE
S57XZ427WXIPO88

ESTATÍSTICAS GERAIS DA SONDA 777

27-06-13 às 18:30



ESTATÍSTICAS POR TEMPO



ALERTAS

- 29-06-13 às 18:30**
Valor de sinal demasiado baixo: 33 dB
- 25-06-13 às 13:30**
Valor de sinal demasiado baixo: 13 dB
- 27-06-13 às 11:00**
Valor de sinal baixo: 53 dB

GRAVAÇÕES

- 29-06-13 às 18:30**
Sinal: 33 dB **DOWNLOAD VIDEO**
- 29-06-13 às 18:30**
Sinal: 13 dB **DOWNLOAD VIDEO**
- 12-05-13 às 10:35**
Sinal: 93 dB **DOWNLOAD VIDEO**

DETALHES DA INSTALAÇÃO

iPad 4:20 PM

Procurar casas

IMÓVEIS | SÍTIOS PERFEITOS ★★★★★
Esta é a zona perfeita para ti!

LISTA FILTROS FAVORITOS

Preço Data

Alto do Lumiar

Moradia T5 **95%**
300.000 € Perfeita

Baixa-Chiado

Apartamento T3 **94%**
900 € / Mês Perfeito

Santos

Parque das Nações

Apartamento T3
900€ / Mês

3 2 1

Mapa Satélite

A fantastic tourism platform

register now & start using our fantastic API

sign up

Our API



What is it?

It is a platform. A service. A middleware. A recommendation system. It is an engine that powers your apps and allows you to worry about your users' experience instead of the technical mess. It's especially directed at **tourism** and **mobility** apps, but it can help any app that needs real time location services. Interested?

What can you build with it?

Anything related to tourism. We bet we can help you with it. Or if you need a cross-platform app that does geo-fencing, user tracking, handles custom virtual ID cards or helps you promote your location or your events. If you doubt we can help you, just send us an email at support@pervasivetourism.com

Do you want to know how it works?

[see our documentation](#)

Our Solutions

walk

1st Ubiwhere spin-off on Smart Cities



bike
emotion®
BIKE SHARING TECHNOLOGY

ENJOY FREEDOM

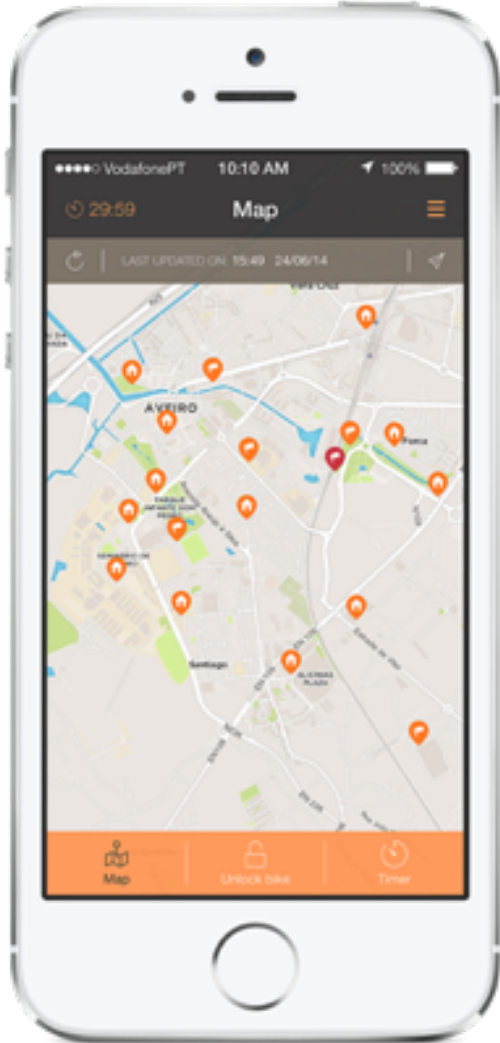
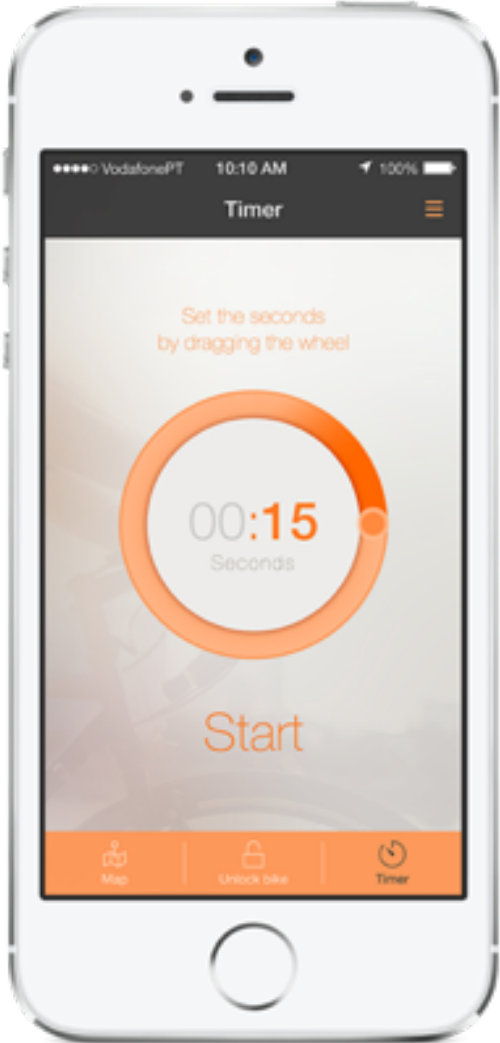
www.bikeemotion.com

THE ULTIMATE URBAN VEHICLE

It will change the way
you move.







Starting...

1 st	Wolfsburg	Germany, Europe	50
2 nd	Birmingham	Alabama, US	400
3 rd	Algarve	Portugal, Europe	25
4 th	Richmond	Virginia, US	250
5 th	Baltimore	Maryland, US	500
6 th	...		

Birmingham (Alabama, US)



Birmingham (Alabama, US)



Birmingham (Alabama, US)



Urban Intelligence on Smart Cities

Urban Intelligence on Smart Cities

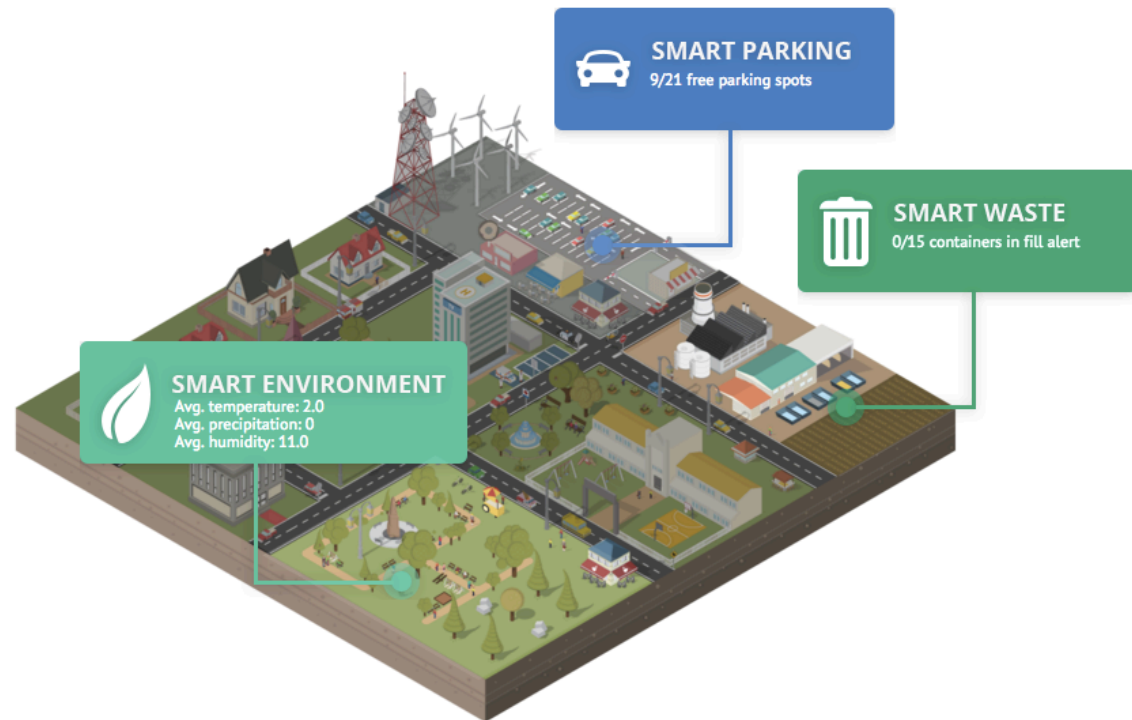
Events

Overview

Dashboards

Management

Apps



Unified Smart Cities' Solutions

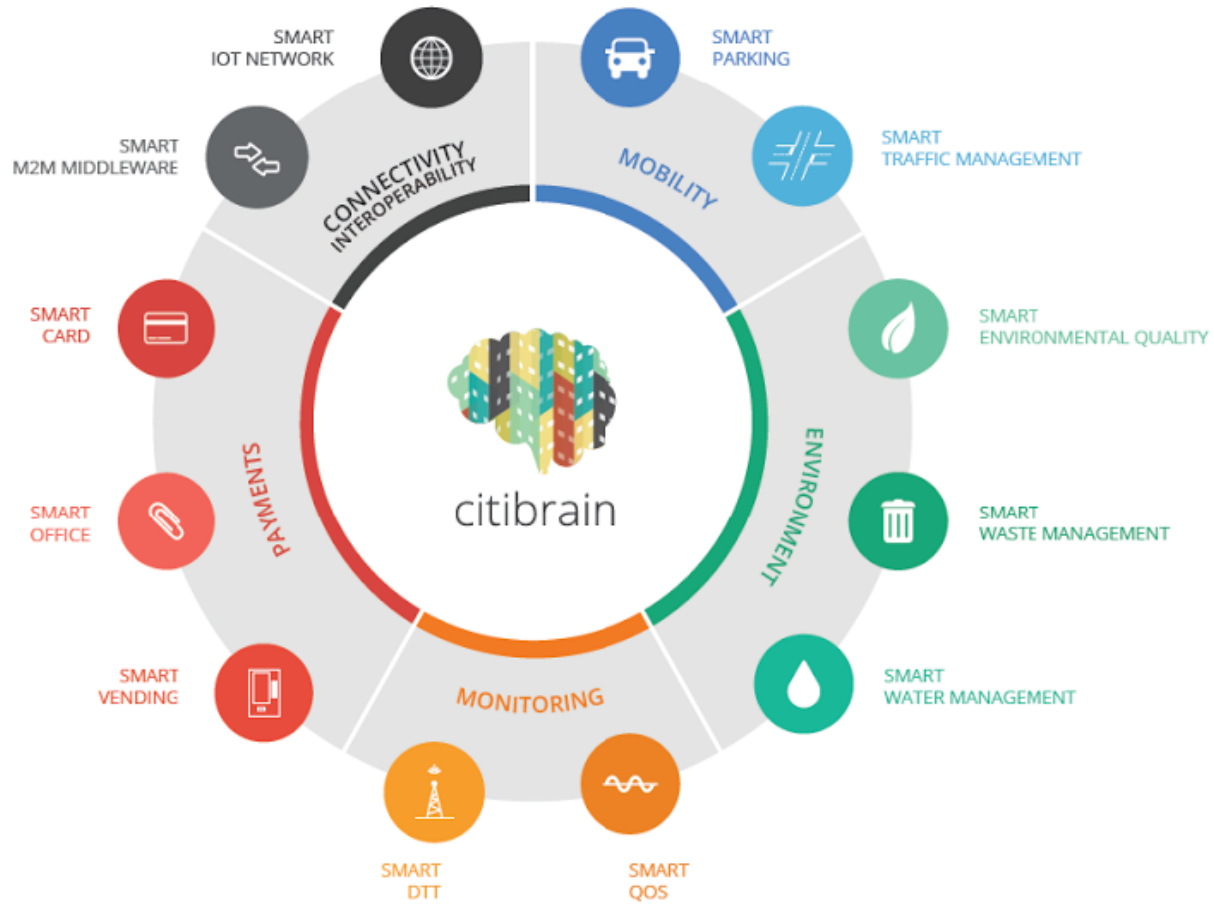
Unified Smart Cities' Solutions





citibrain

ubiwhere
SUITING THE FUTURE



www.citibrain.com



FIWARE

FIWARE

ubiwhere
SUITING THE FUTURE



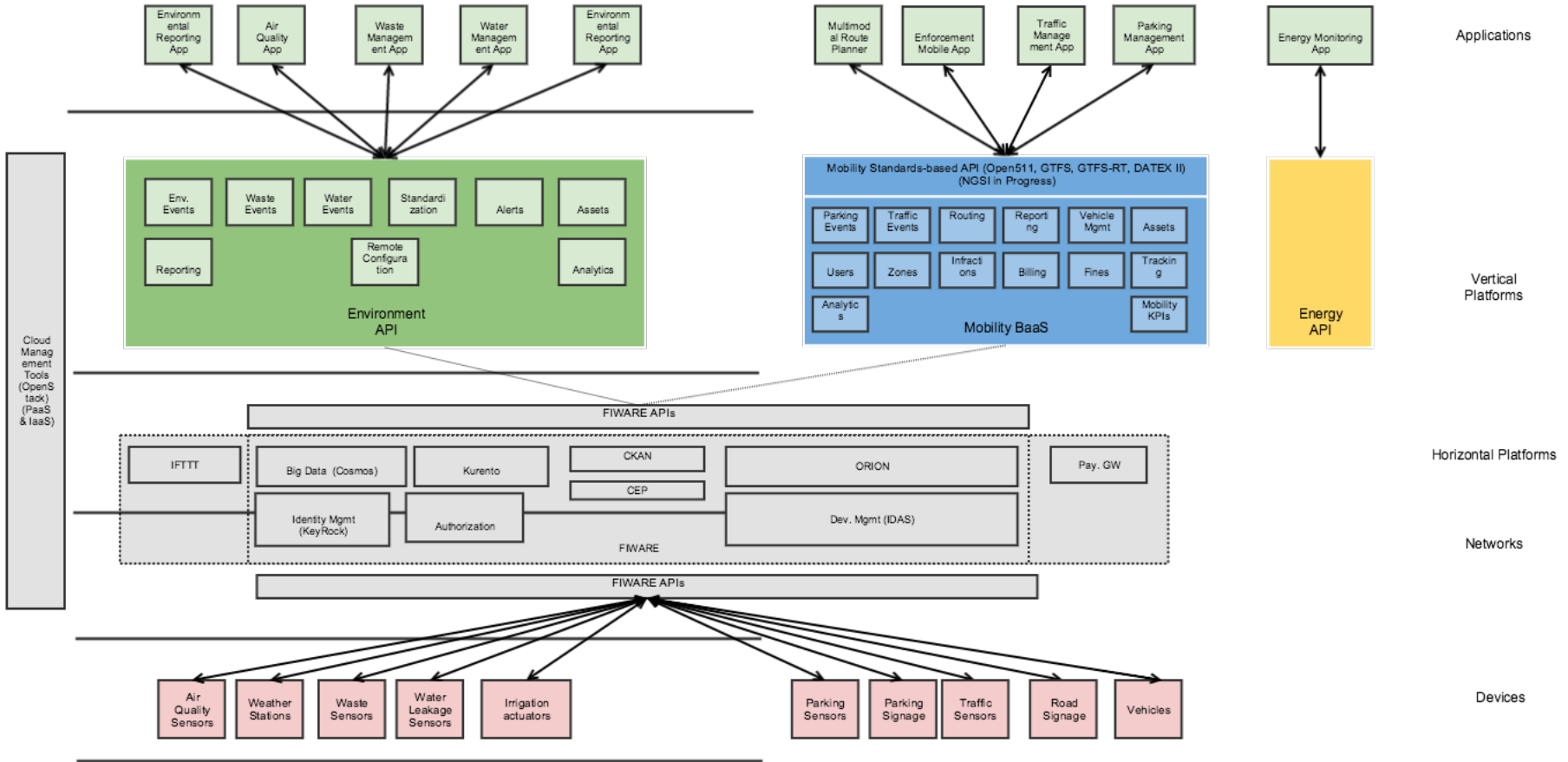
#MYFIWARESTORY

SMART CITIES

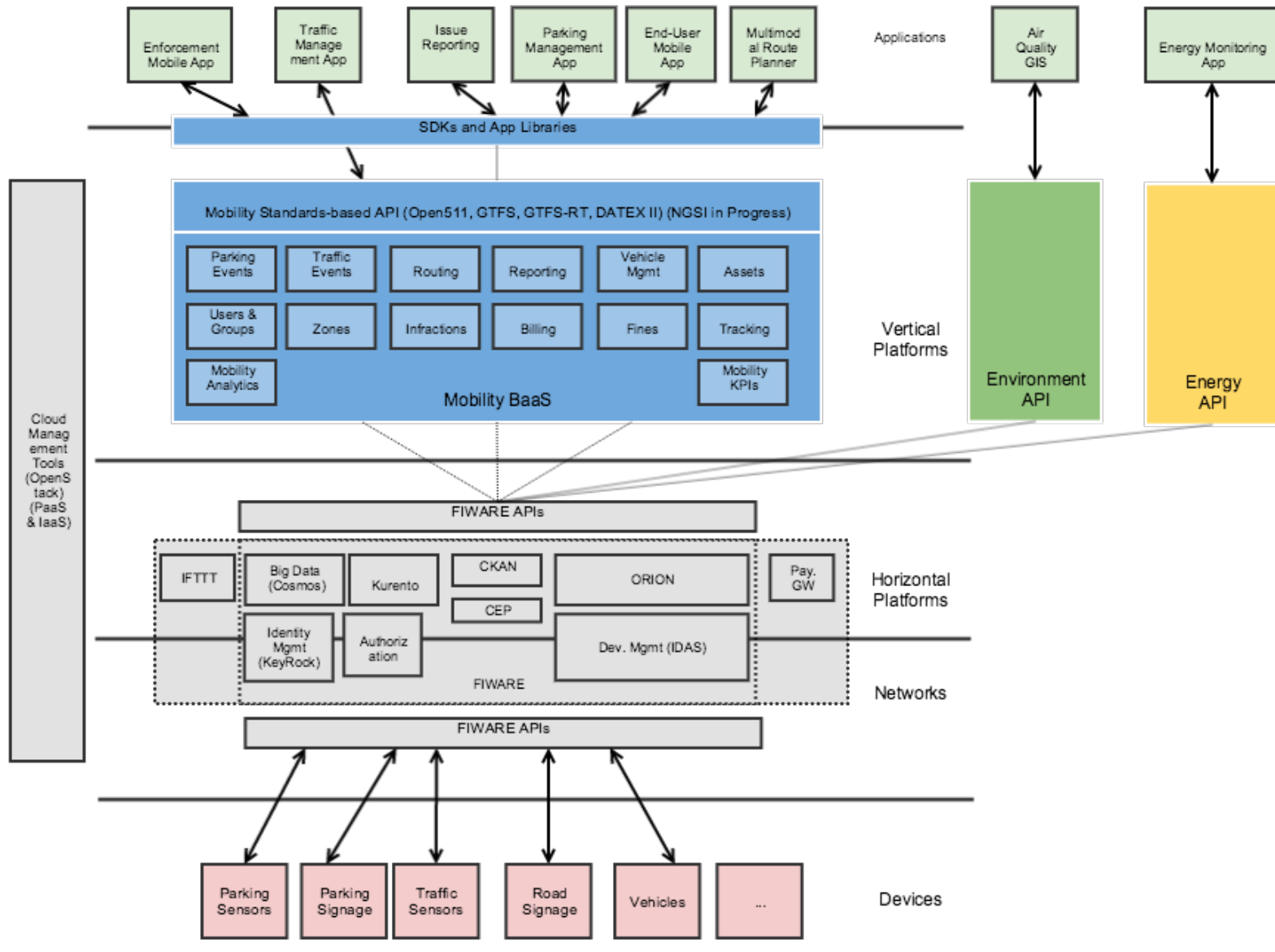
THIS IS
OUR
STORY
WHICH IS YOURS?



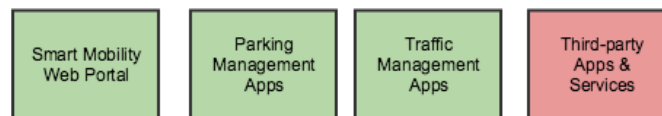
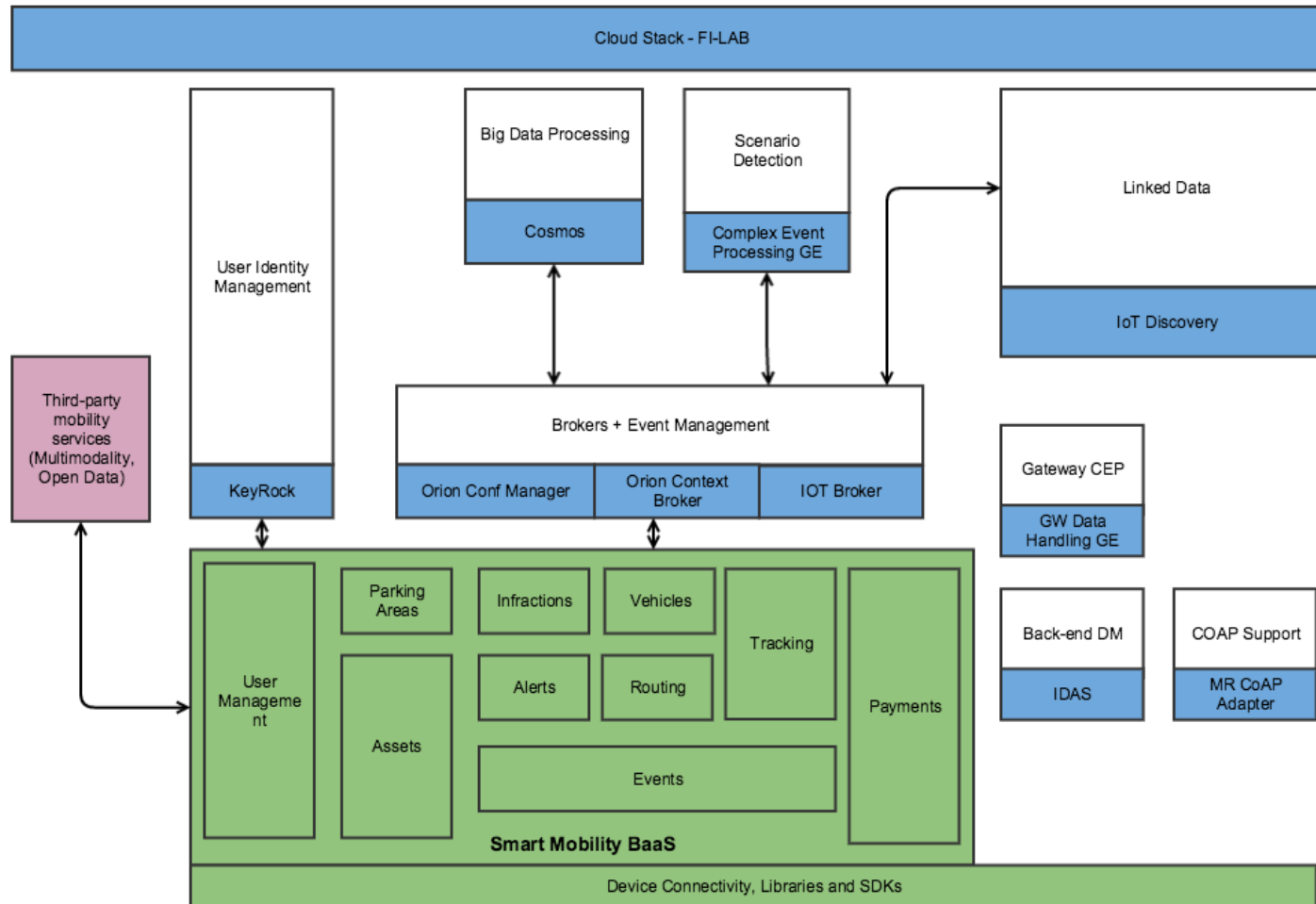
Ubiwhere & FIWARE – Vertical BaaS



FIWARE – Mobility BaaS



FIWARE – Smart Parking



FIWARE in use with third parties

Demos on FIWARE Smart Cities' Solutions



- Vodafone
 - Vodafone Parking - <http://parking.vodafone.citibrain.com/>
 - Vodafone Waste - <http://waste.vodafone.citibrain.com/>
- Telefonica (ongoing)
- Indra (ongoing)
- SigFox / Narrownet
 - Smart Parking
- Citibrain
 - Control Center - <http://control.citibrain.com>
 - Smart Parking - <http://parking.citibrain.com>
 - Smart Waste - <http://waste.citibrain.com>
 - Smart Environment - <http://environment.citibrain.com>

FIWARE @ Porto, Portugal

PORTO: A FIWARE ENABLED CITY



The Porto FIWARE Ecosystem

Ubiwhere activities...

1. Making happen the *Porto FIWARE Node*
2. Improving the Quality of Life (QoL) in a Smart City (through 75 connected sensors)
 - Air Quality... 15 different sensors/parameters
 - Noise
 - Temperature
3. Making touristic POI “openly available” (using CKAN)
4. Integrating the *Porto FIWARE Node* with
 1. the UrbanSense project/ platform
 1. Taxis, Buses, Waste trucks
 2. the VideoSensing project/ platform
 3. the One.Stop.Transport project/platform
5. Developing the MoodSensor iOS app
6. Developing the Water Metering Platform and Mobile App

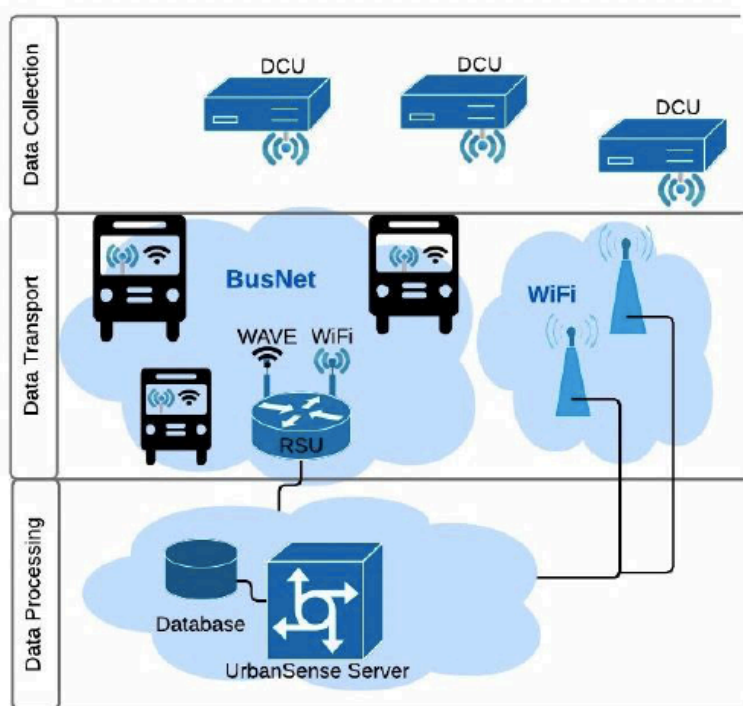
Data Sources to reach real Urban Intelligence on Unified Smart Cities' Solutions

- Porto City (FutureCities and UrbanSense) data
 - Environment events
 - Traffic events



UrbanSense
Mobility

UrbanSense platform architecture



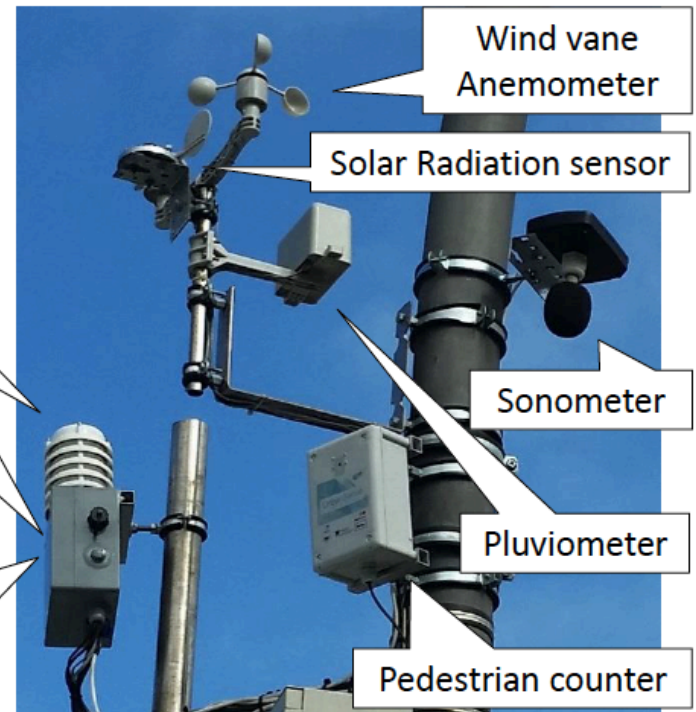
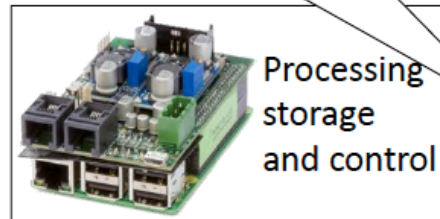
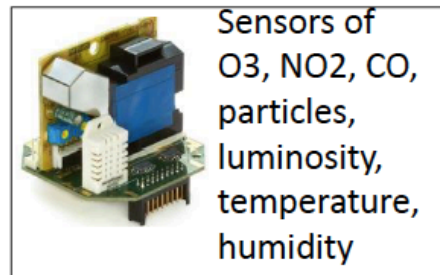
- Data collection Units (DCUs)
 - Sensors
 - Pedestrian counters
 - Environmental sensors
 - Static DCUs locations
 - 75 environmental in static locations
 - 60 pedestrian counters in static locations
- Data communications: WiFi
 - Large availability around the city
 - City hotspots: Porto Digital or Eduroam
 - Use buses as data mules
- Data storage
 - Relational database stored in the cloud
 - Acknowledgments for received data

UrbanSense
Environment

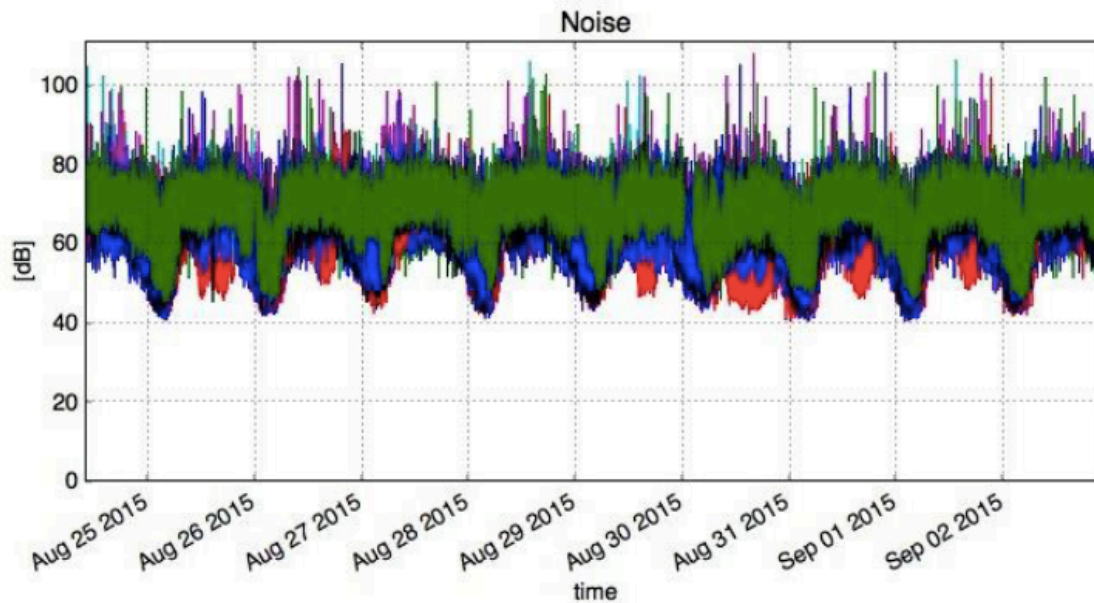
Data Collecting Units components



- Developed within FC
 - Software
 - Hardware
- Based on Raspberry Pi
- Control Board
- Sensor board
- Low cost sensors
- 2 Wi-Fi interfaces
- Enclosure and shield

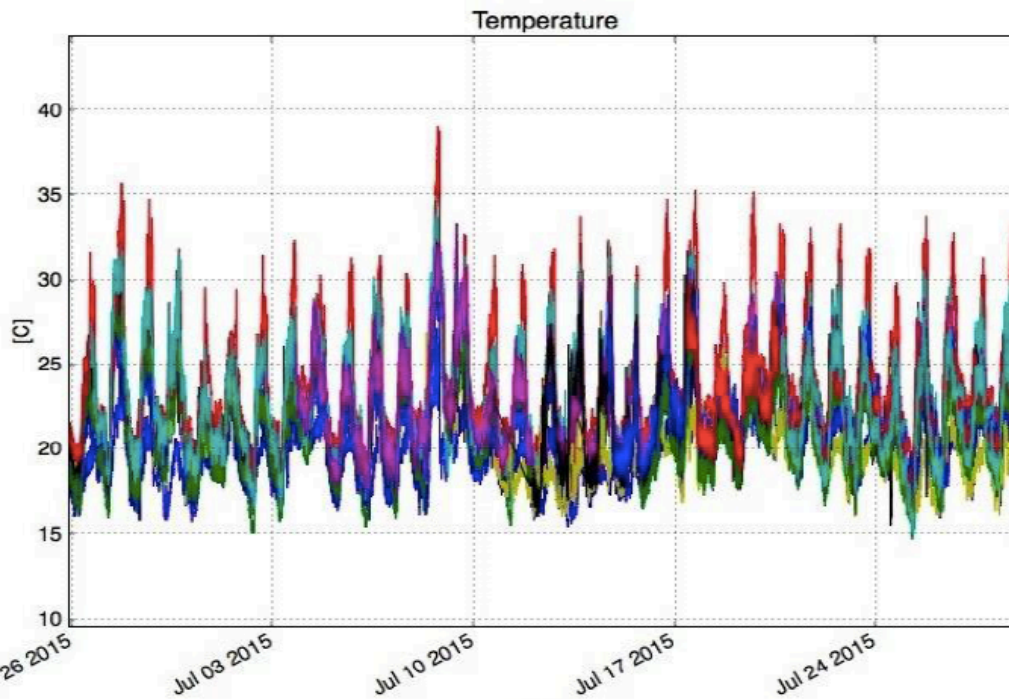


Noise measurements



- Anemona D2422
- Praca do Marques - pole 1 D2489
- Combatentes D3269
- D. Manuel II D8908
- Praca da Galiza D9063
- Av. Franca D9220
- Candido dos Reis D9703
- Damiao de Gois D11076
- 24 de Agosto Ferreira Cardoso D11436
- Rua das Flores D11619
- Bolhao - pole 1 D11804
- Pr. Liberdade Cardosas D13753
- Castelo do Queijo D15859
- Estadio do Dragao D16080
- Casa da Musica D16981
- Campo Alegre D18146
- Hospital de S. Joao D19114
- Trindade D22470

Temperature measurements



- Anemona D2422
- Praca do Marques - pole 1 D2489
- Combatentes D3269
- D. Manuel II D8908
- Praca da Galiza D9063
- Av. Franca D9220
- Candido dos Reis D9703
- Damiao de Gois D11076
- 24 de Agosto Ferreira Cardoso D11436
- Rua das Flores D11619
- Bolhao - pole 1 D11804
- Pr. Liberdade Cardosas D13753
- Castelo do Queijo D15859
- Estadio do Dragao D16080
- Casa da Musica D16981
- Reitoria D17674
- Campo Alegre D18146
- Hospital de S. Joao D19114
- Fundacao de Serralves D21406
- FEUP P1 D21934
- Trindade D22470
- FEUP Roof D23566

Water Consumption App

PORTO, Water Consumption App

ubiwhere
SUITING THE FUTURE



Aplicação Móvel das Águas do Porto

Alguma frase para aqui!

Funcionalidades da Aplicação



Solicitar Acesso à Aplicação

Lorem ipsum dolor sit amet, consectetur adipiscing elit. Cras at libero sit amet tortor suscipit molestie id in justo. Proin lacinia lobortis augue dignissim molestie.

Número de Cliente

Número de Contador

Email do Utilizador

Sistema Operativo do Smartphone

Solicitar Acesso à Aplicação

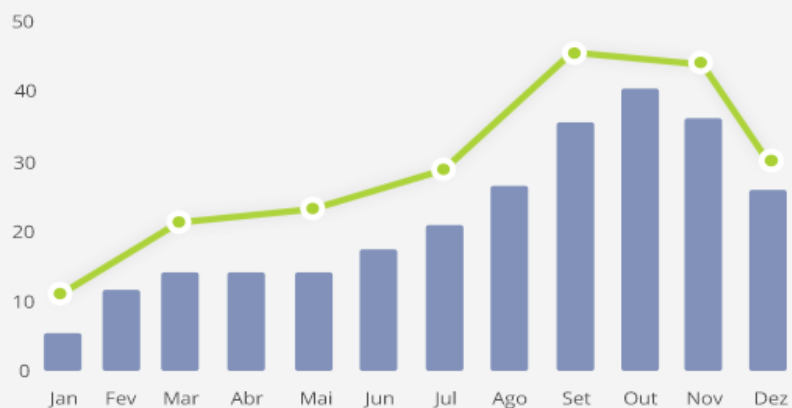
PORTO, Water Consumption App

ubiwhere
SUITING THE FUTURE



Insira a sua pesquisa

Total do consumo de água



Qualidade Média



Qualidade de água excelente
PEAASAR II

Sair

Dashboard

Utilizadores

Água Consumo

Água Balnear

Alertas

Notificações

Estatísticas

Ajuda

Contactos

Utilizadores

- . Anabela Silva
- . João Pedrosa
- . Joana Fitas
- . Bruno Garcia
- . Mafalda Capelo
- . Ana Santos

MAIS

Alertas

- . Obras nos Aliados
- . Intervenção programada no dia 24 de julho na avenida
- . Intervenção técnica 06/2015
- . Alteração ao trânsito devido a obras de reparação de conduta ...

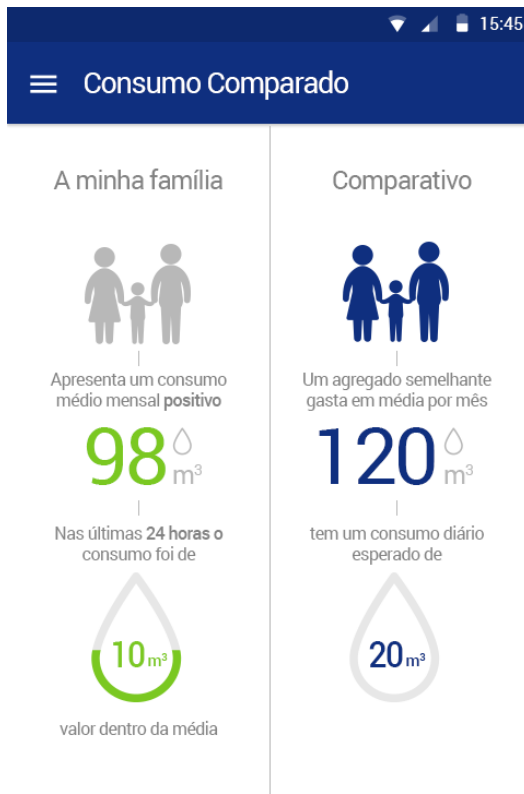
MAIS

Notificações

- . Foi lançada a versão 1.0.4 da aplicação, com novas funcionalidades
- . Dia 15 de agosto, não perca a festa da água no porto
- . Inauguração da estação de águas dos aliados

MAIS

PORTO, Water Consumption App



Parabéns!

A sua família está a fazer uma utilização responsável de água.



Sólidos dissolvidos totais

159 mg/L

Máx. 167
Med. 139
Min. 115

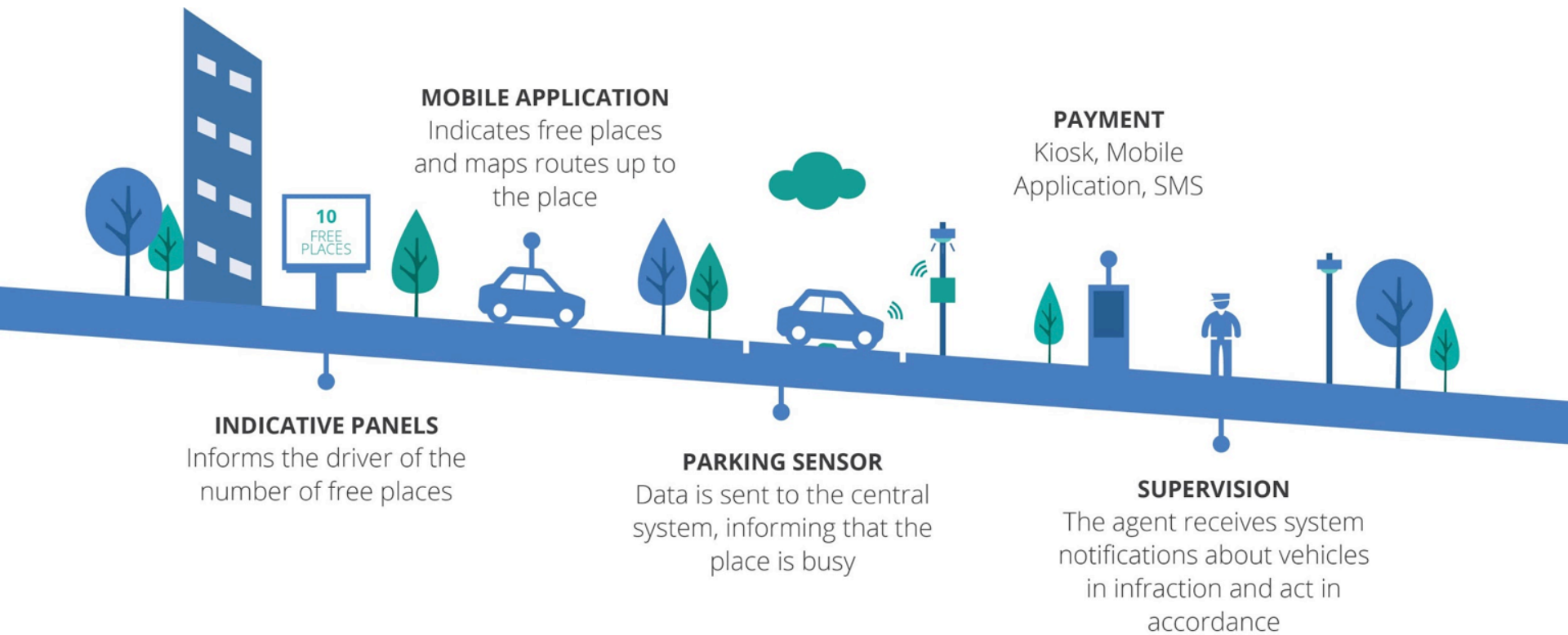
Citibrain Vertical Applications



SMART PARKING

A PARKING TICKET THAT NEVER EXPIRES

HOW IT WORKS





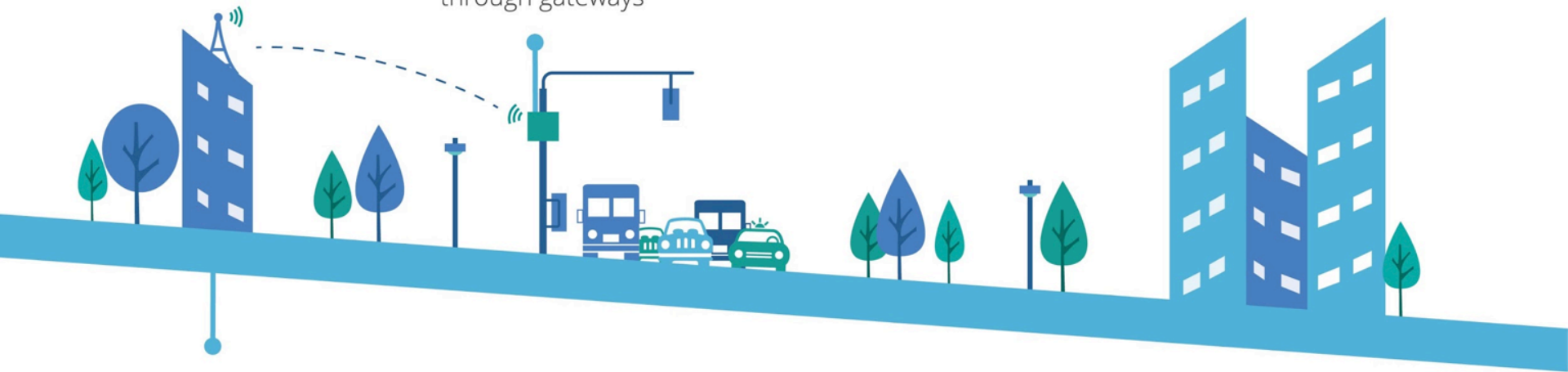
SMART TRAFFIC MANAGEMENT

NO ONE LIKES TO WAIT

HOW IT WORKS

SENSOR

Transmits the volume and flow of traffic through gateways



CENTRAL SYSTEM

- . Infers inputs from the sensor network detecting and predicting traffic congestion;
- . Redirects vehicles through suggestions in the vertical panels;
- . Provides directions in mobile applications;
- . Provides alerts on websites of public consultation;
- . Controls the vertical signalling privileging the traffic flow in critical areas;
- . Accessible and integrated with civil protection systems, creating privileged routes in case of catastrophes, accidents and emergencies of any kind.



RECYCLABLES

SMART WASTE MANAGEMENT

VALUE URBAN WASTE

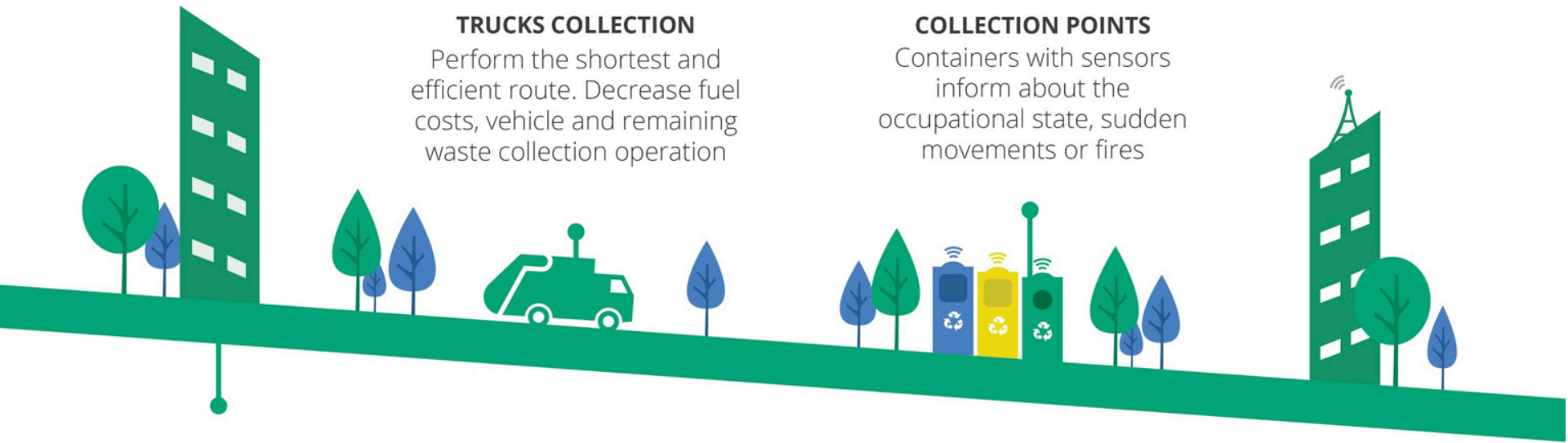
HOW IT WORKS

TRUCKS COLLECTION

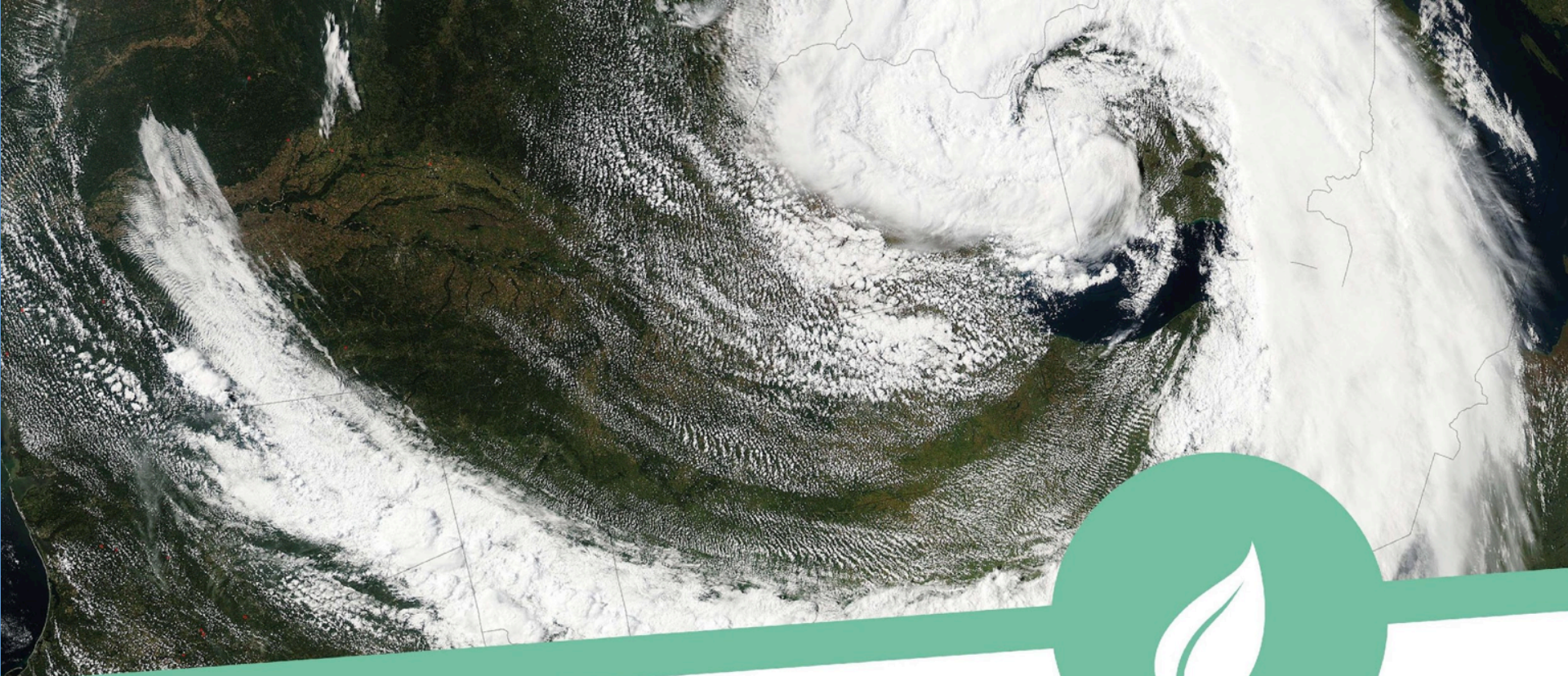
Perform the shortest and efficient route. Decrease fuel costs, vehicle and remaining waste collection operation

COLLECTION POINTS

Containers with sensors inform about the occupational state, sudden movements or fires



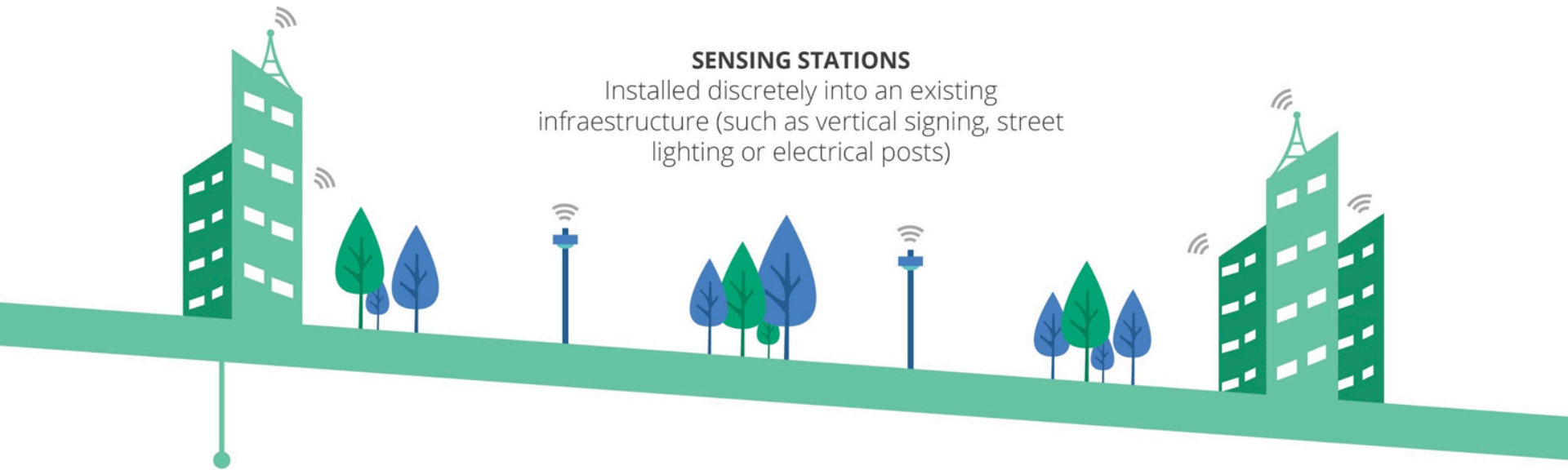
The system allows the access to waste containers through RFID cards. The garbage bags used by each citizen allow the identification, meaning that the waste placed by them will be recorded in his user account. After confirming the contents of the bags in the selection phase of the waste processing company, these "points" can be used to calculate the rate of urban waste



SMART ENVIRONMENTAL QUALITY

ENVIRONMENT IS AN ESSENTIAL GOOD

HOW IT WORKS



SENSING STATIONS

Installed discretely into an existing infrastructure (such as vertical signing, street lighting or electrical posts)

The information collected by these stations can be used to improve urban planning and strategy and the interaction with the residents of the city, but also be combined with information from other Citibrain systems to define new strategies for managing traffic, detect risk situations or emergencies, and how to measure parameters of urban space by citizens.

These stations communicate in real time with Citibrain's Core Management System (through Smart IOT Network or through Wi-Fi or GPRS), and are powered energetically by the structure in which they are installed.



ubiwhere
SUITING THE FUTURE

THANK YOU!

+351 234 484 466
rdi@ubiwhere.com
www.ubiwhere.com