

Examples of FIWARE Applications

- September, 2016
- Karen Najera

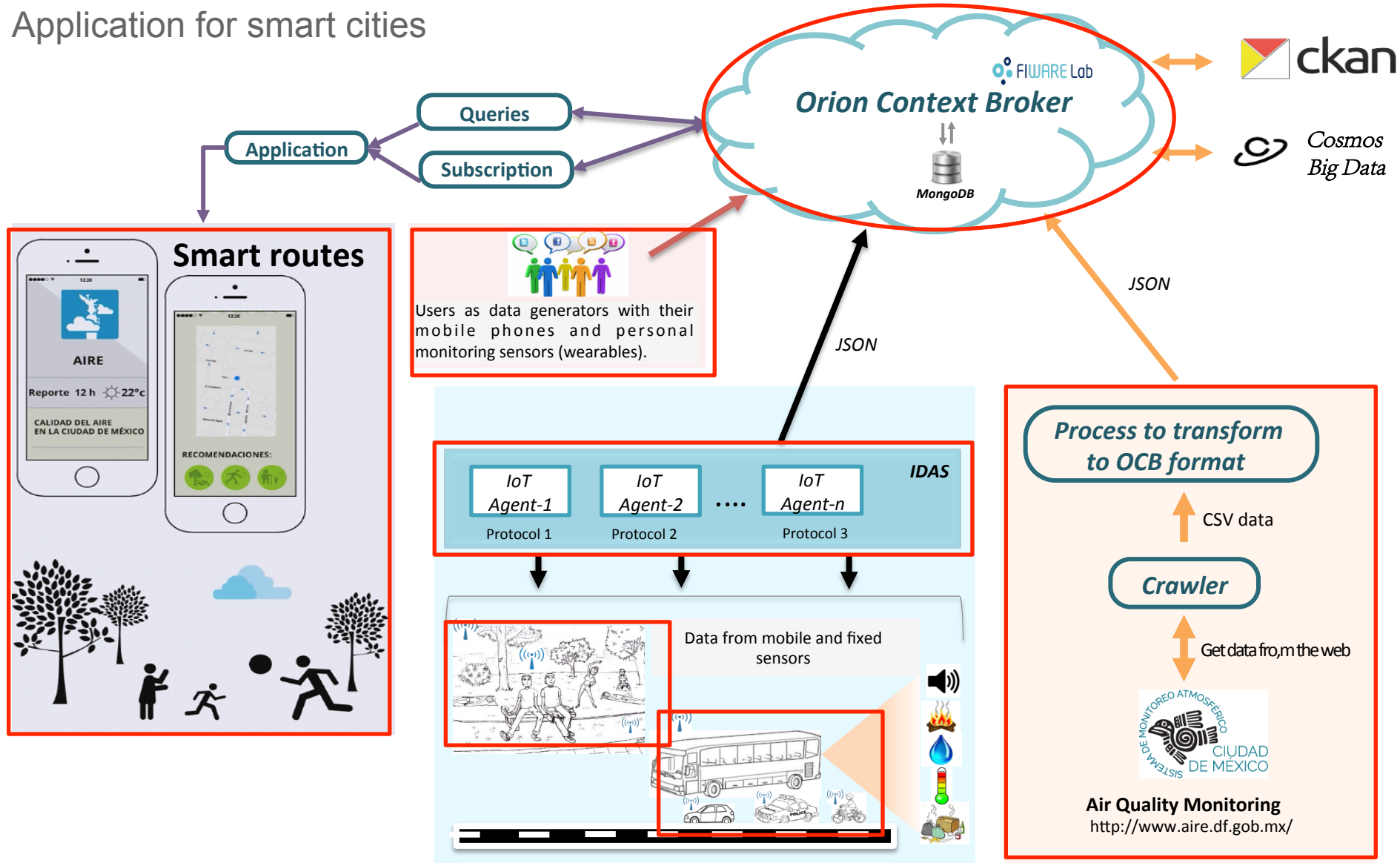


FIWARE Applications developed by INFOTEC

1. Green Route... application for smart cities
2. Wilma... a plant interacting with the world
3. Cloudino... An Internet of Things Platform

Green Route

Application for smart cities



Green Route

Smart mobility application



Collaboration



National
laboratories



Future Internet



GeoIntelligence

Mobile unit

A mobile sensor unit is being developed by integrants of our embedded systems laboratory

Scientific contribution

Hugo Estrada, Karen Nájera, Blanca Vázquez, Alicia Martínez, Juan Carlos Téllez y Juan José Hierro. *Applying Tropos modeling for Smart mobility applications based on the FIWARE platform*. Ninth International i* Workshop, Beijing, China. September, 2016, vol. 1157.

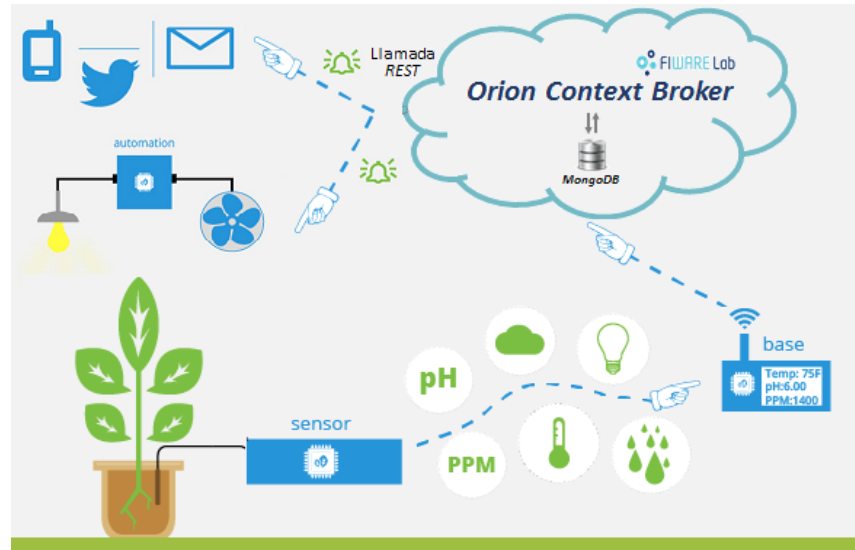


Wilma the plant

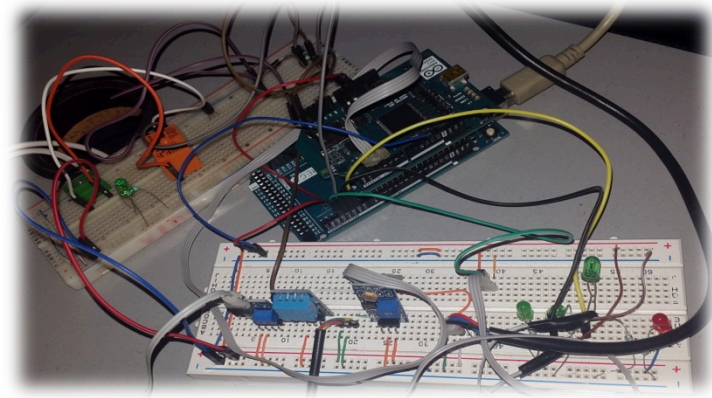
Interacting with the world



Wilma is a brazilwood plant connected to the FIWARE Cloud to communicate its status through several sensors.



Ground humidity, presence, luminosity and temperature

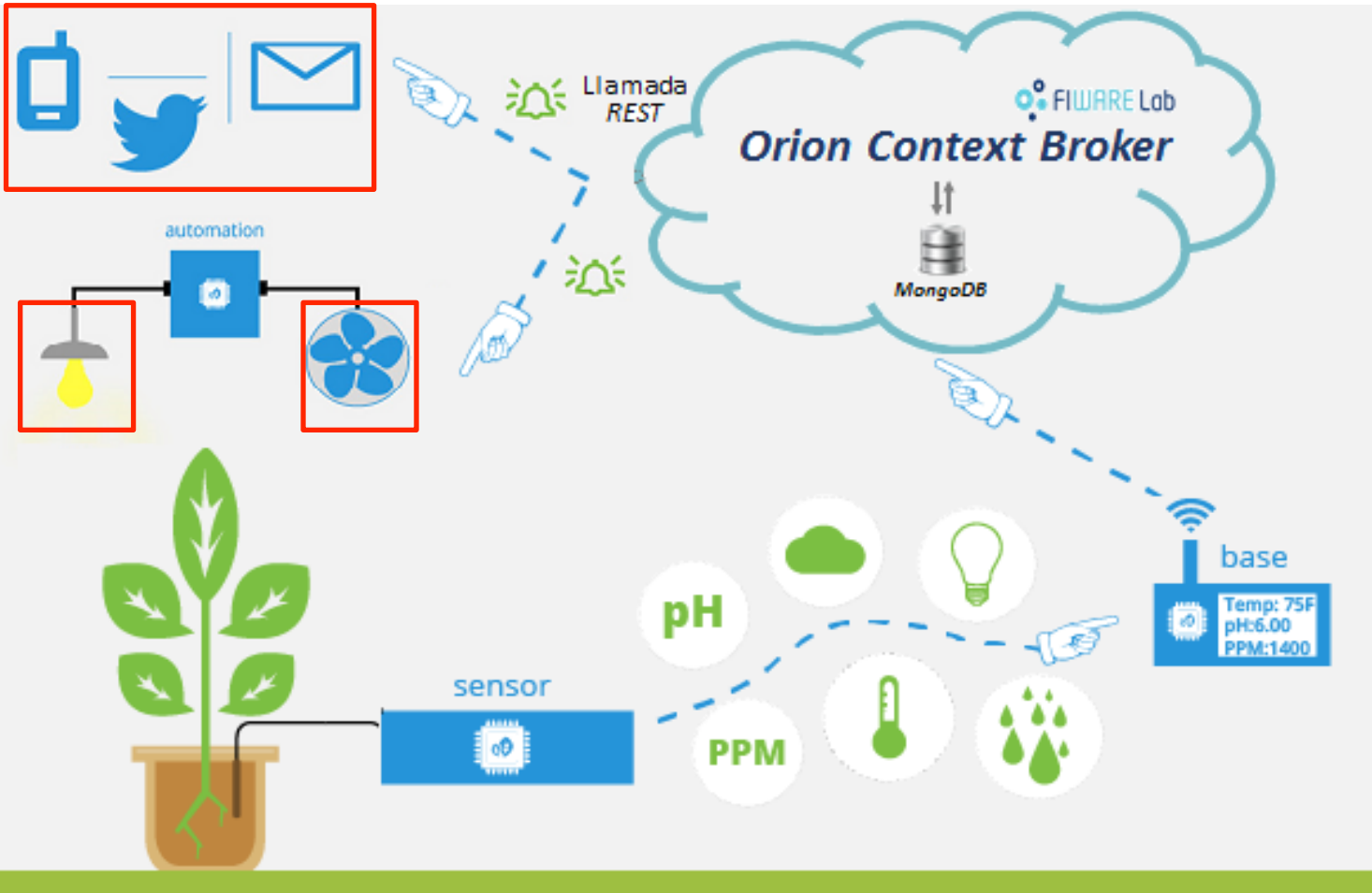


Wilma the plant

Interacting with the world



Wilma is a FIWARE Cloud through sev

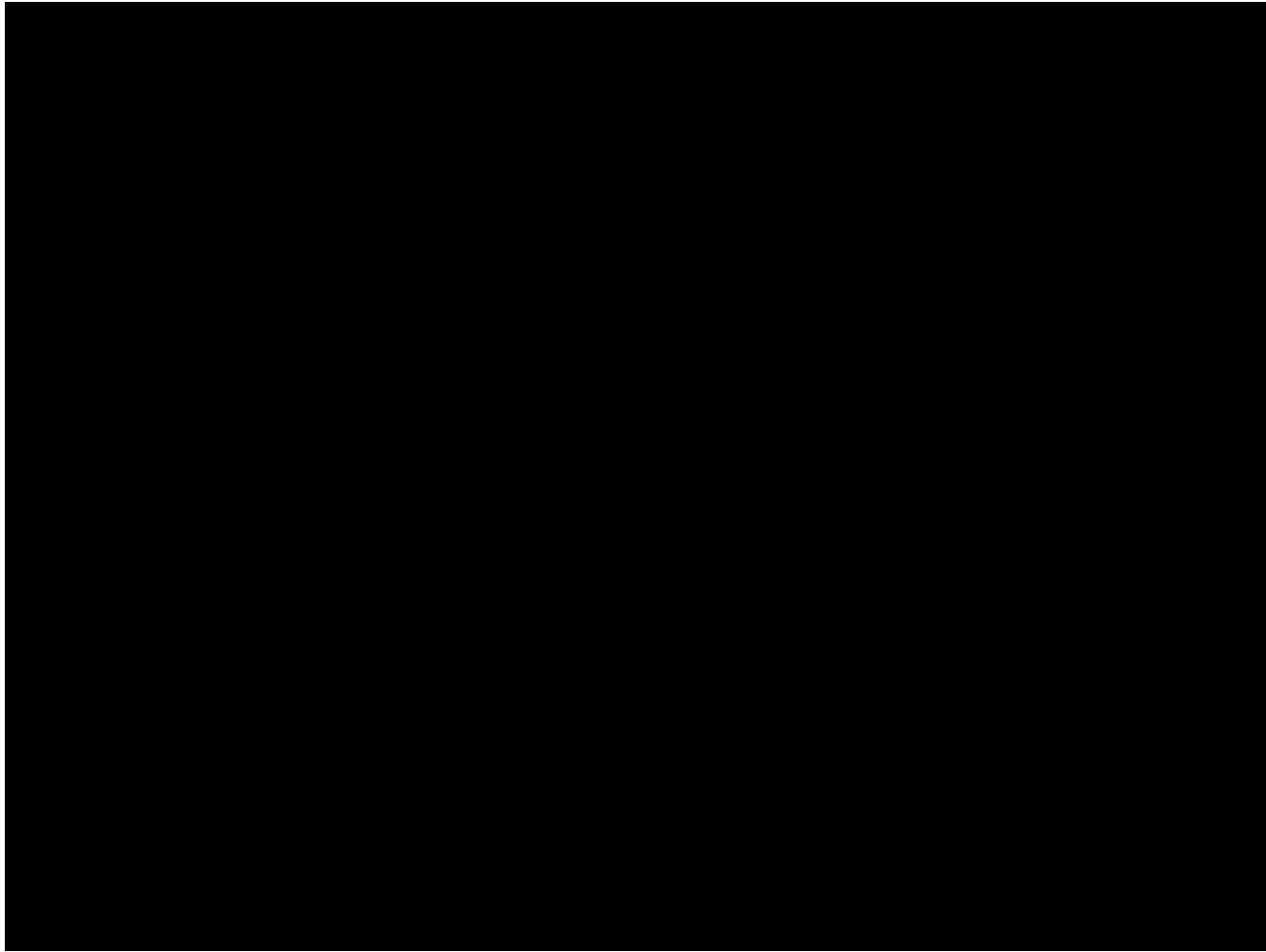


Ground luminosity and temperature



Wilma the plant

Interacting with the world



Cloudino

An Internet of Things platform



Cloudino is an IoT platform that allows connecting different microcontroller platforms (Atmel AVR, PIC, Intel Edison, etc.) to the cloud in a simple and transparent way.

Open Source and Open Hardware



WiFi Cloud Connector

- It is a **WiFi device** that connects microcontrollers to the Internet.
- It has an **independent processor** working in parallel dedicated only to the network layer including the IoT protocols.
- It allows **reprogramming the microcontroller** via WiFi.



Arduino API

It provides an API that gets integrated directly with the APIs available in FIWARE.



Cloud Service

Cloud services for managing IoT devices from the web.

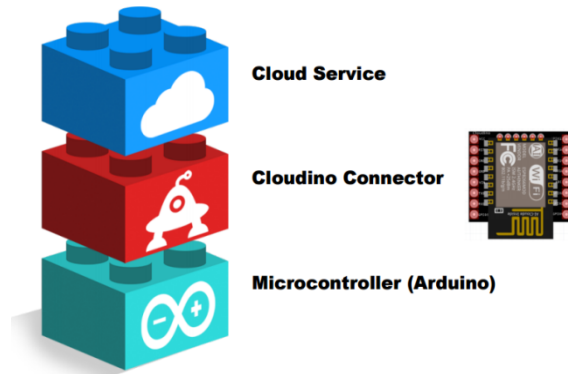


Cloudino

an Internet of Things Platform



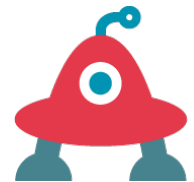
It encapsulates the complexity of FIWARE, providing:



- Direct Connection to Orion Context Broker
- Connection via MQTT IoT-Agent (IDAS)
- Connection via Cloudino.io cloud service

The first Hardware Generic Enabler that integrates IoT devices to the FIWARE platform.

<http://cloudino.io/>



Join us!

-
- Mexican FIWARE Lab node team
 - nodofiwaremexico@infotec.mx
 - www.lanif.infotec.mx